

AX88796B Windows XP Driver User Guide

Revision 1.0
Aug. 29, 2006

Revision History

Revision	Date	Description
1.0	2006/8/29	New release.

Content

1. Description	4
2. Driver Installation	4
3. Driver Configuration	12
4. How to verify AX88796B driver network function	15

1. Description

AX88796B is a full NE2000 register level compatible, low-pin-count (64-pin LQFP) non-PCI Ethernet controller for the Embedded and Industrial Ethernet applications. AX88796B also supports some advanced features like Auto-MDIX, Flow Control, WOL, VLAN, Back-To-Back Transmission, etc.

Since AX88796B is a full NE2000 register level compatible Fast Ethernet controller, the standard NE2000 drivers can work with AX88796B without any modification. ASIX provides the AX88796B WinXP/2K driver to support the advanced features like media mode configuration, Flow Control, WOL, VLAN, Back-To-Back Transmission, etc.

This document indicates how to install/configure the AX88796B WinXP/2K driver on Windows XP platform.

2. Driver Installation

Please follow below procedures to install AX88796B WinXP/2K driver on Windows XP platform. Users can also refer to these procedures to install AX88796B WinXP/2K driver on Windows 2000 platform.

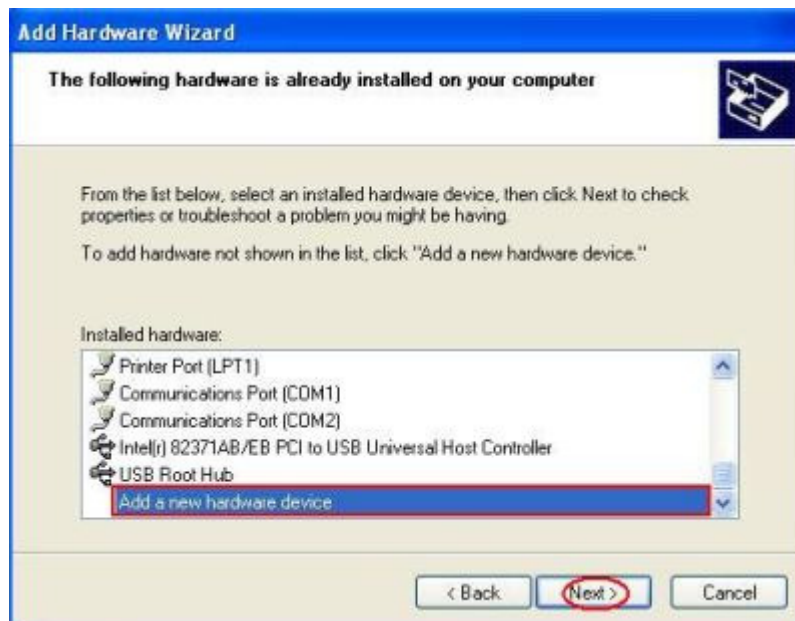
1. Run “Add Hardware” from “Control Panel” and then press Next button.



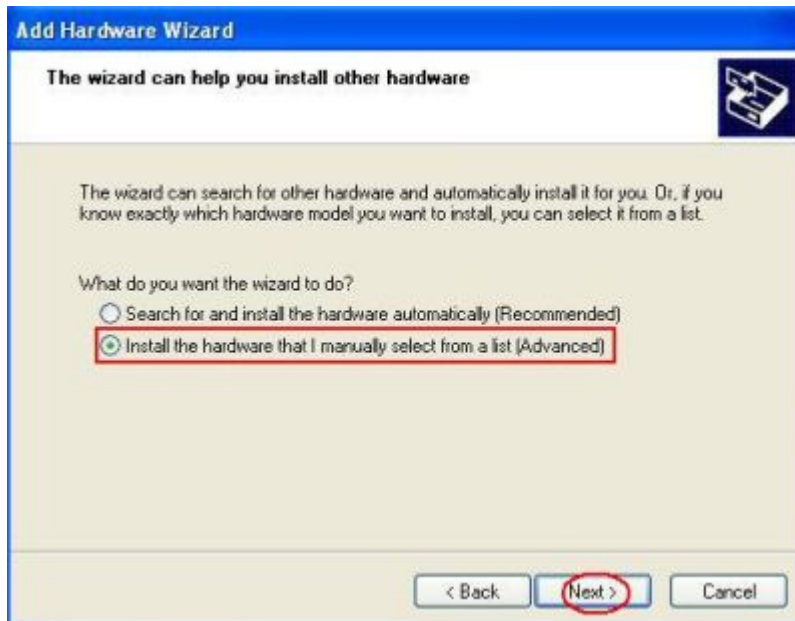
2. Select “Yes, I have already connected the hardware” and then press Next button.



3. Select “Add a new hardware device” and then press Next button.



4. Select “Install the hardware that I manually select from a list (Advanced)” and then press Next button.



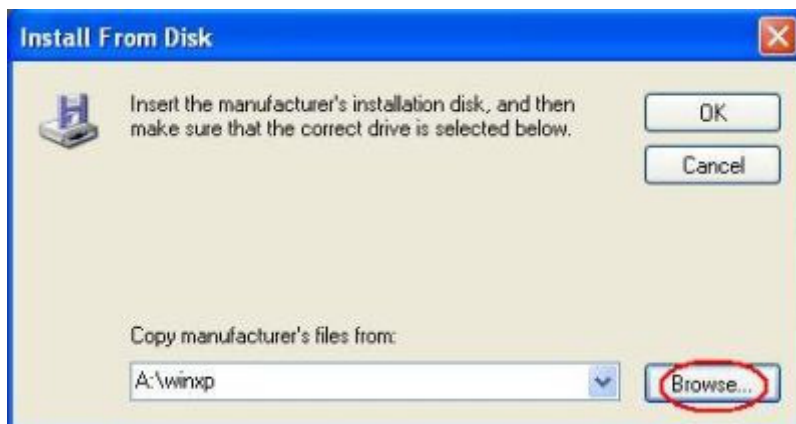
5. Select “Network adapters” and then press Next button.



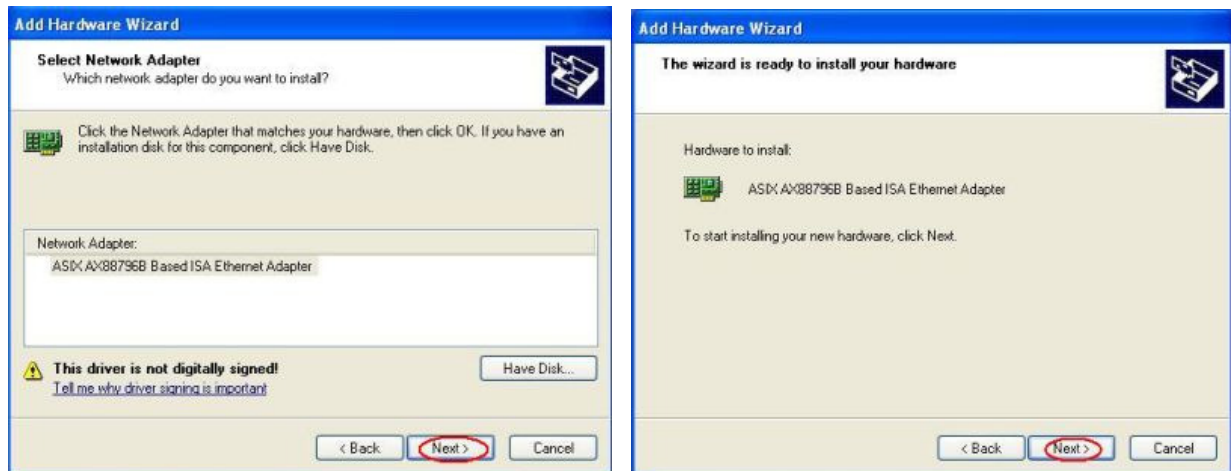
6. Select “Have Disk” and then press Next button.



7. Press Browser button to select the source path of AX88796B WinXP/2K driver and then press Next button.



8. The Hardware Wizard will find the AX88796B WinXP/2K driver and then press Next button to install AX88796B driver.



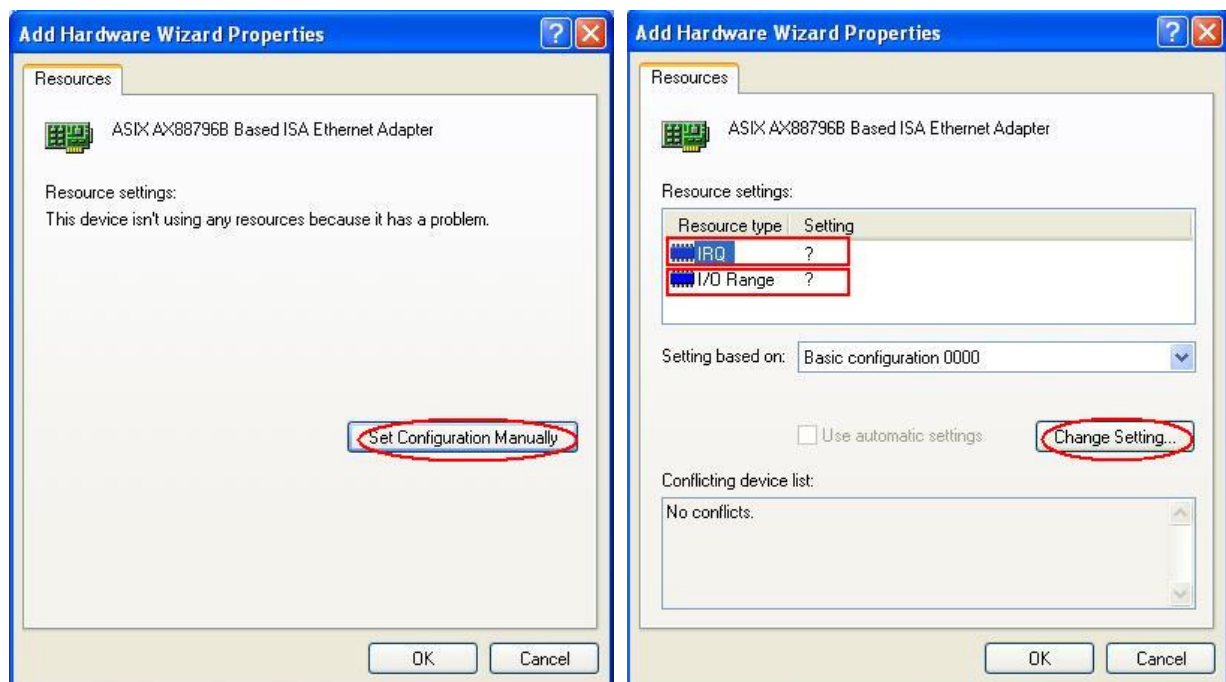
9. Press “Continue Anyway” button to continue the driver installation.



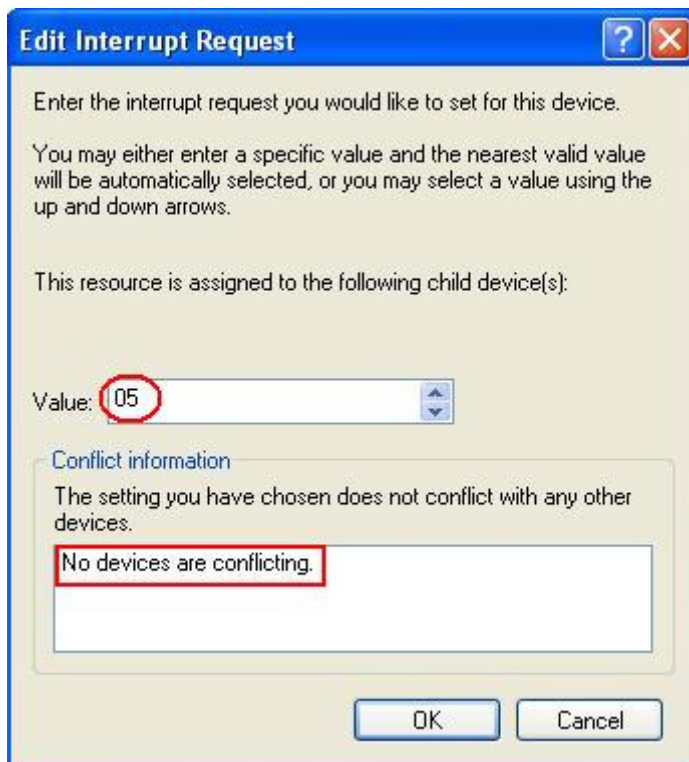
10. Press “View or change resources for this hardware (Advanced)” to set a proper I/O Port and IRQ of AX88796B to match the I/O and IRQ jumpers setting of AX88796B ISA demo board.



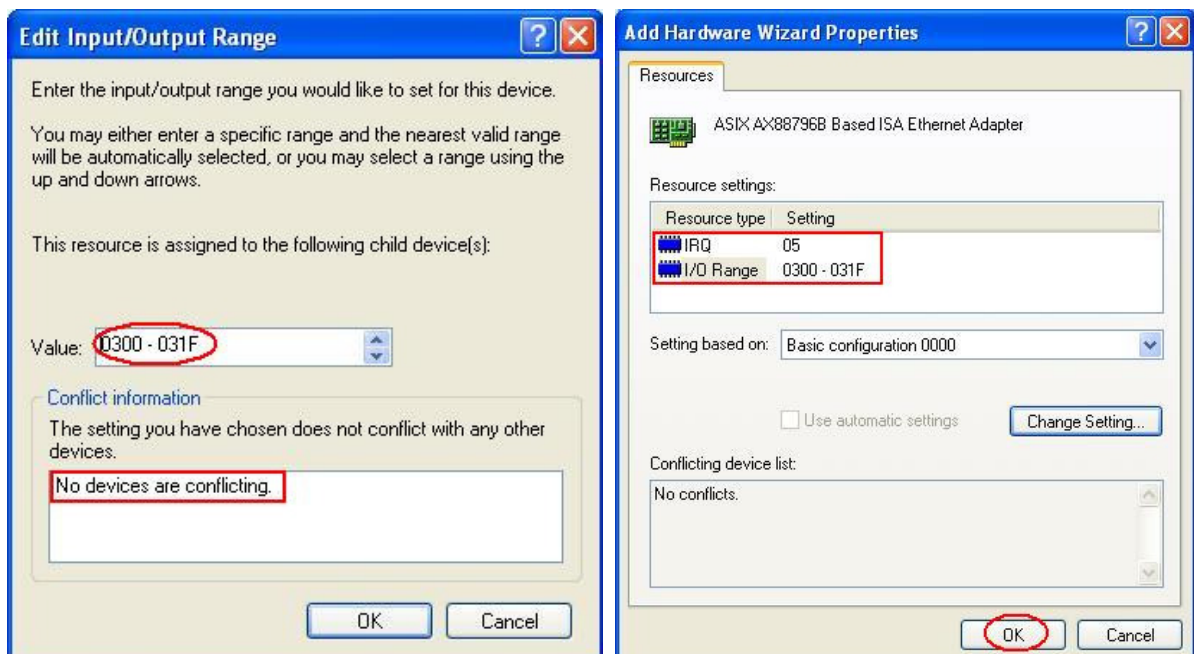
11. Select “Set Configuration Manually” to set a proper I/O range and IRQ of AX88796B.



12. Select a proper IRQ and make sure the setting is not conflicted with other device and then press OK button.



13. Select a proper I/O Range and make sure the setting is not conflicted with other device and then press OK button.



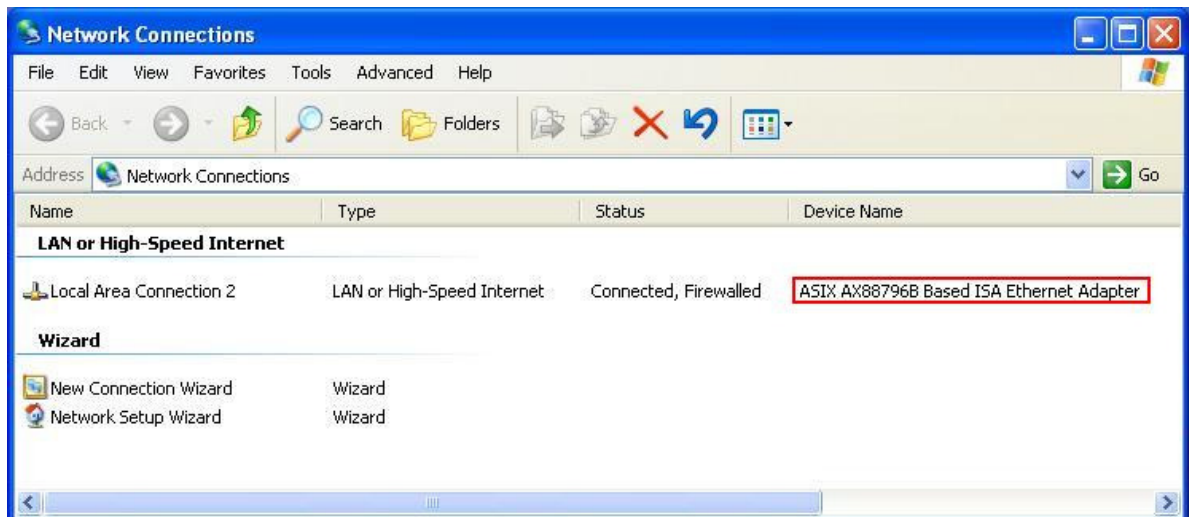
14. Press Finish button to complete AX88796B WinXP driver installation.



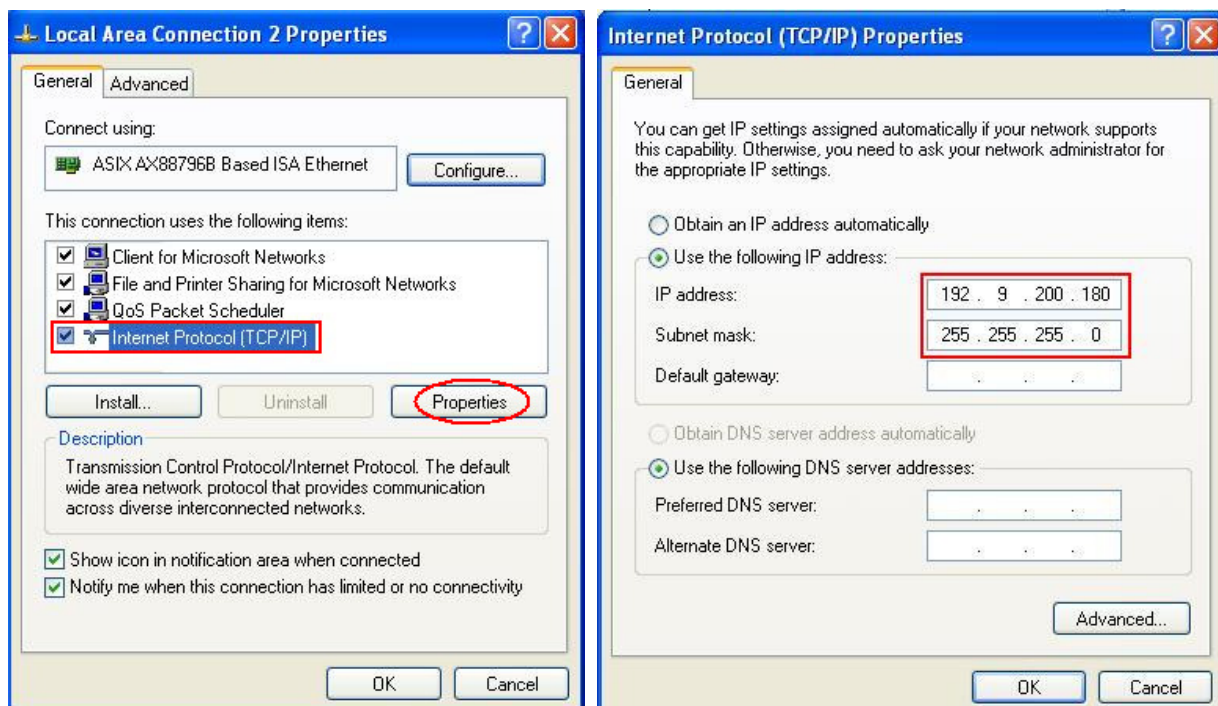
3. Driver Configuration

Please follow below procedures to configure the parameters of AX88796B WinXP/2K driver.

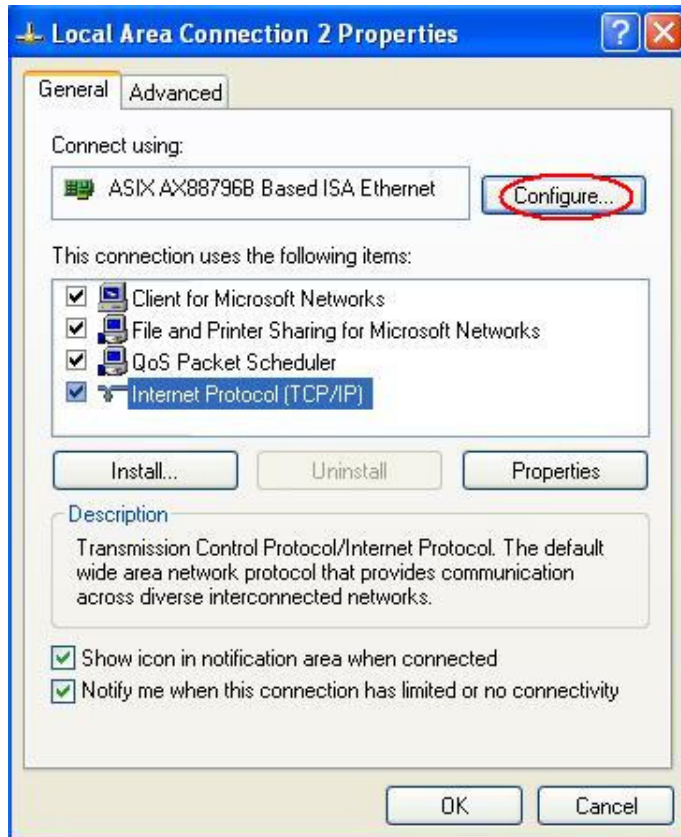
1. Select “Properties” item of ASIX AX88796B Based ISA Ethernet Adapter from “Network Connections” window.



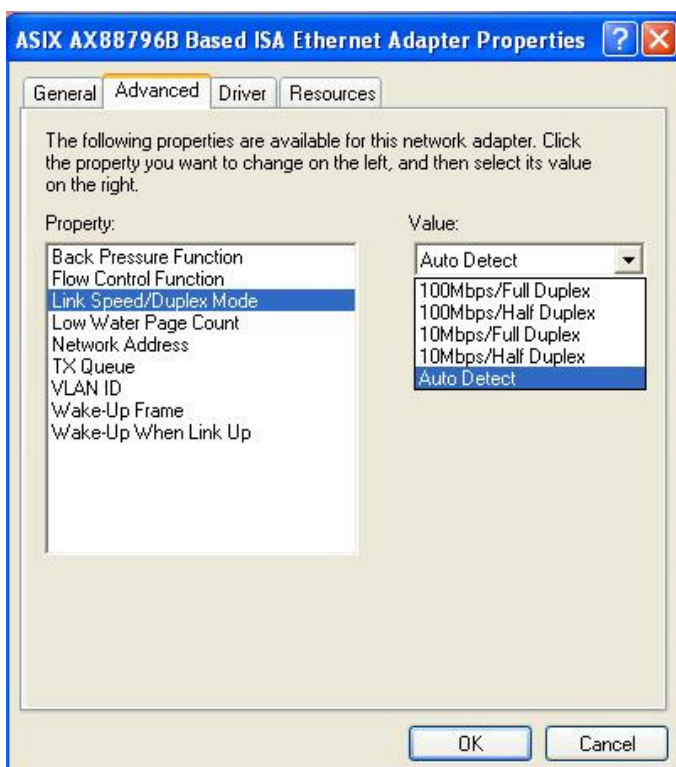
2. Select “Internet Protocol (TCP/IP)” and press Properties button to configure the IP address and Subnet Mask address of AX88796B driver.



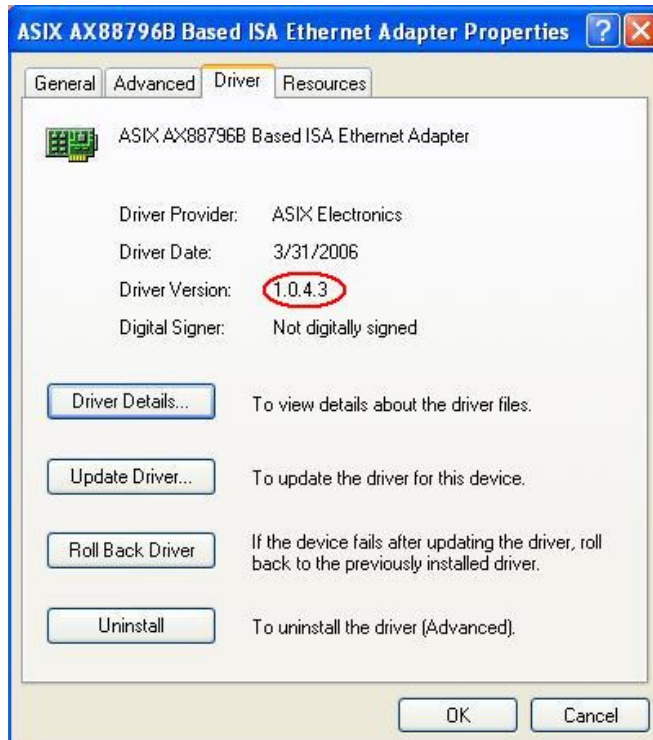
3. Press Configure button to configure ASIX AX88796B Based ISA Ethernet adapter driver.



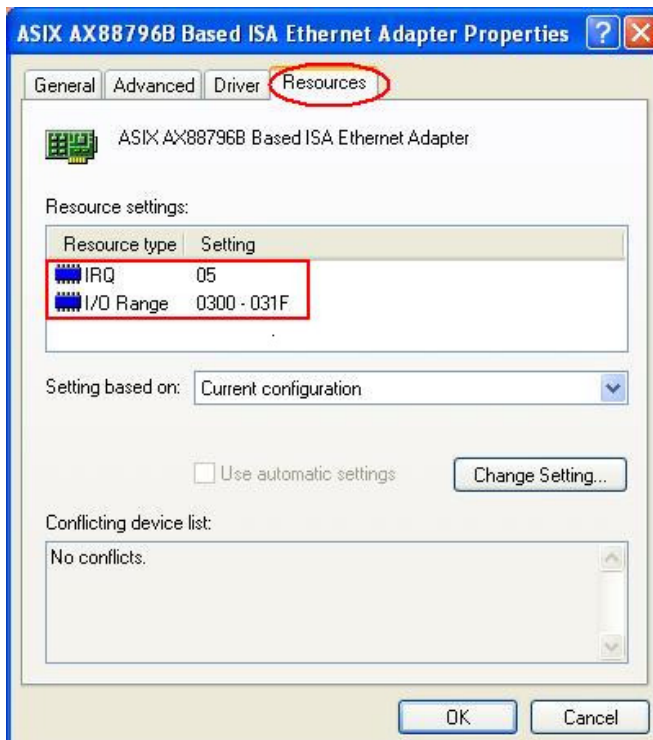
4. Select "Advanced" item to configure the parameters of AX88796B driver and then press OK button.



5. Select “Driver” item to check the version number of AX88796B driver if necessary.



6. Select “Resources” item to configure the I/O Port and IRQ of AX88796B driver if necessary.

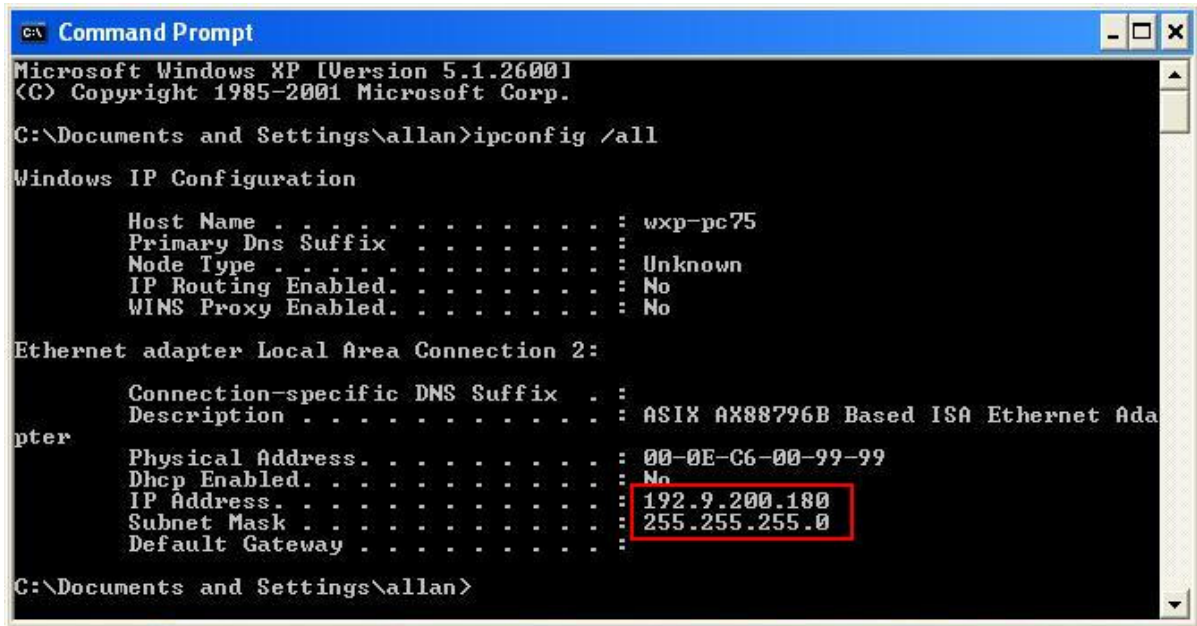


7. Press OK buttons to quit the Properties dialog of AX88796B driver to take effect the new configuration setting.

4. How to verify AX88796B driver network function

Please follow below procedures to verify the AX88796B WinXP/2K driver network function.

1. Run “ipconfig /all” command in DOS Prompt console to check the current IP address of AX88796B driver.



```
C:\> Command Prompt
Microsoft Windows XP [Version 5.1.2600]
(C) Copyright 1985-2001 Microsoft Corp.

C:\Documents and Settings\allan>ipconfig /all

Windows IP Configuration

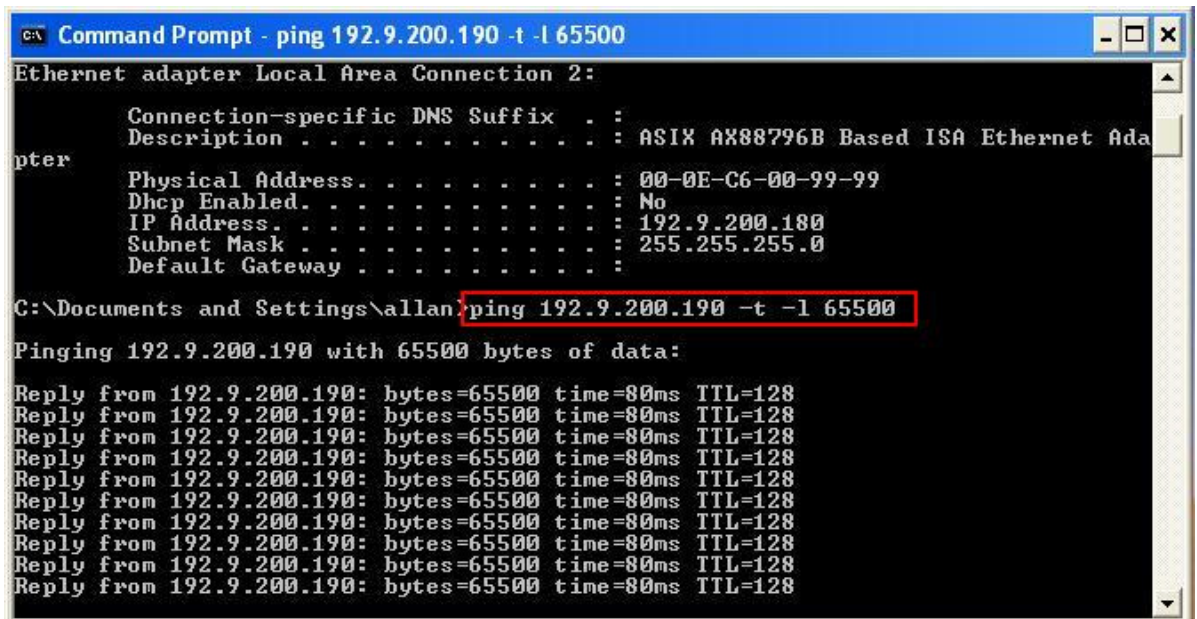
    Host Name . . . . . : wxp-pc75
    Primary Dns Suffix . . . . . :
    Node Type . . . . . : Unknown
    IP Routing Enabled. . . . . : No
    WINS Proxy Enabled. . . . . : No

Ethernet adapter Local Area Connection 2:

    Connection-specific DNS Suffix . :
    Description . . . . . : ASIX AX88796B Based ISA Ethernet Ada
    pter
    Physical Address. . . . . : 00-0E-C6-00-99-99
    Dhcp Enabled. . . . . : No
    IP Address. . . . . : 192.9.200.180
    Subnet Mask . . . . . : 255.255.255.0
    Default Gateway . . . . . :

C:\Documents and Settings\allan>
```

2. Run “ping xxx.xxx.xxx.xxx” command in DOS Prompt console to check the network function of AX88796B driver. (xxx.xxx.xxx.xxx is the IP address of remote PC.)



```
C:\> Command Prompt - ping 192.9.200.190 -t -l 65500

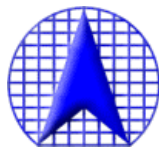
Ethernet adapter Local Area Connection 2:

    Connection-specific DNS Suffix . :
    Description . . . . . : ASIX AX88796B Based ISA Ethernet Ada
    pter
    Physical Address. . . . . : 00-0E-C6-00-99-99
    Dhcp Enabled. . . . . : No
    IP Address. . . . . : 192.9.200.180
    Subnet Mask . . . . . : 255.255.255.0
    Default Gateway . . . . . :

C:\Documents and Settings\allan>ping 192.9.200.190 -t -l 65500

Pinging 192.9.200.190 with 65500 bytes of data:

Reply from 192.9.200.190: bytes=65500 time=80ms TTL=128
Reply from 192.9.200.190: bytes=65500 time=80ms TTL=128
Reply from 192.9.200.190: bytes=65500 time=80ms TTL=128
Reply from 192.9.200.190: bytes=65500 time=80ms TTL=128
Reply from 192.9.200.190: bytes=65500 time=80ms TTL=128
Reply from 192.9.200.190: bytes=65500 time=80ms TTL=128
Reply from 192.9.200.190: bytes=65500 time=80ms TTL=128
Reply from 192.9.200.190: bytes=65500 time=80ms TTL=128
Reply from 192.9.200.190: bytes=65500 time=80ms TTL=128
Reply from 192.9.200.190: bytes=65500 time=80ms TTL=128
```



ASIX Electronics Corporation.

**4F, No.8, Hsin Ann Rd., Hsinchu Science Park,
Hsinchu, Taiwan, R.O.C.**

TEL: +886-3-5799500

FAX: +886-3-5799558

Email: support@asix.com.tw

Web: <http://www.asix.com.tw/>